



UNITEC MANUFACTURING DIVISION

[www.eversan.com](http://www.eversan.com)

**MODEL 9875**

**STADIUM BASEBALL**

**SCOREBOARD**

**(WITH INNING BY INNING SCORING)**

**Instruction Manual**

**Mailing Address:** PO Box 260, Yorkville, NY 13495-0260

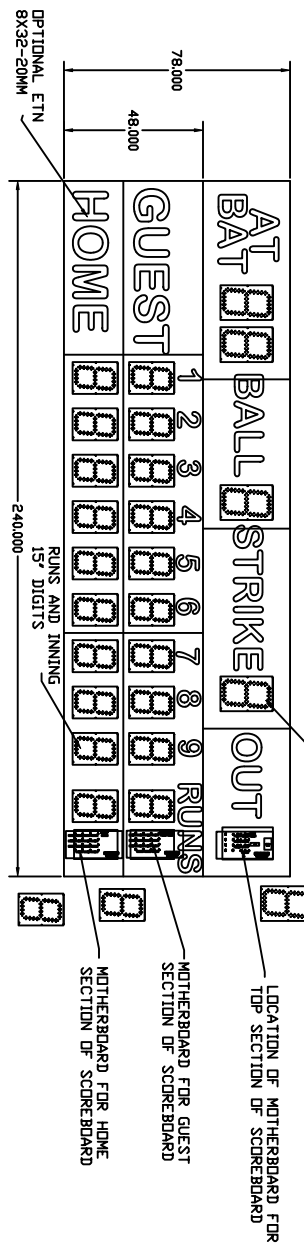
**Plant Address:** 34 Main Street, Whitesboro, NY 13492

**Phone: 315-736-3967 • Toll Free: 800-383-6060 • Fax: 315-736-4058**

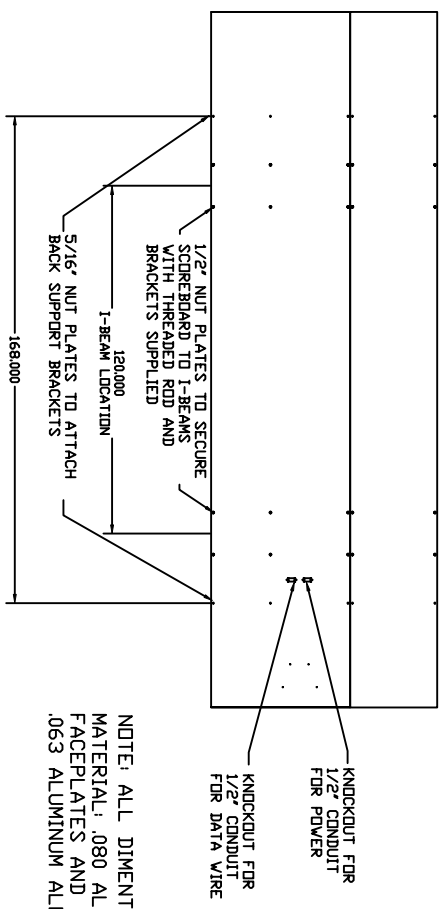
8 7 6 5 4 3 2 1

MODEL 9875 BASEBALL/SOFTBALL

FRONT VIEW



BACK VIEW



NOTE: ALL DIMENSIONS IN INCHES  
MATERIAL: .080 ALUMINUM FRAME, FACEPLATES AND BACK PLATES, .063 ALUMINUM ALL DIGITS

A

A

8 7 6 5 4 3 2 1

DATE	REV	DESCRIPTION	DATE	REV	DESCRIPTION
5/15	1	ISSUED FOR FABRICATION	5/15	1	ISSUED FOR FABRICATION
5/15	2	UNRECORDED TOLERANCES	5/15	2	UNRECORDED TOLERANCES
5/15	3	REVISIONS	5/15	3	REVISIONS
5/15	4	REVISIONS	5/15	4	REVISIONS
5/15	5	REVISIONS	5/15	5	REVISIONS
5/15	6	REVISIONS	5/15	6	REVISIONS
5/15	7	REVISIONS	5/15	7	REVISIONS
5/15	8	REVISIONS	5/15	8	REVISIONS
5/15	9	REVISIONS	5/15	9	REVISIONS
5/15	10	REVISIONS	5/15	10	REVISIONS

9875 SHOP DRAWING  
COMPONENT LOCATION  
MODEL 9875  
9875SD  
1 OF 1

EVERSAN

**MODEL 9875  
BASEBALL SCOREBOARD  
INSTALLATION INSTRUCTIONS**

These instructions must be followed to ensure correct operation. The warranty will be violated and considered null if inspection and operating procedures are disregarded.

Should you require assistance or have any questions, please call 800-383-6060.

**Customer Shipping Inspection**

Unpack scoreboard and components and be sure that there are no parts missing or damaged. **Failure to note shipping damage on the Bill of Lading presented to you by the Carrier will severely limit your ability to receive any compensation for damaged or missing parts.** Eversan, Inc. should be notified within 24 hours of delivery of any damaged or missing parts. No claim made after 30 days on missing or damaged parts will receive compensation.

**Check List**

- Model 9875 Scoreboard
  - Control Console with LCD readout
  - Two Conductor Control Cable (Cabled Systems Only)
- Hardware on packing list

**NOTE:** Please check that these items are available prior to installation of the scoreboard. If you are missing any items, please call **(800) 383-6060 for assistance.**

**SHOULD THERE BE A MALFUNCTION OR SHIPPING DAMAGE,  
NOTIFY THE SHIPPER AND EVERSAN IMMEDIATELY.**



**MODEL 9875  
HARDWARE PACKING LIST**

**BACK SUPPORTS 2EA**

**SCOREBOARD MOUNTING BRACKETS 10EA**

**1/2" THREADED ROD 20EA**

**1/2" NUTS 20EA**

**1/2" FLAT WASHERS 20EA**

**1/2" LOCK WASHERS 20EA**

**5" X 3" ALUMINUM PLATES 4EA**

**5/16" X 1" BOLT 18EA**

**5/16" FLAT WASHERS 18EA**

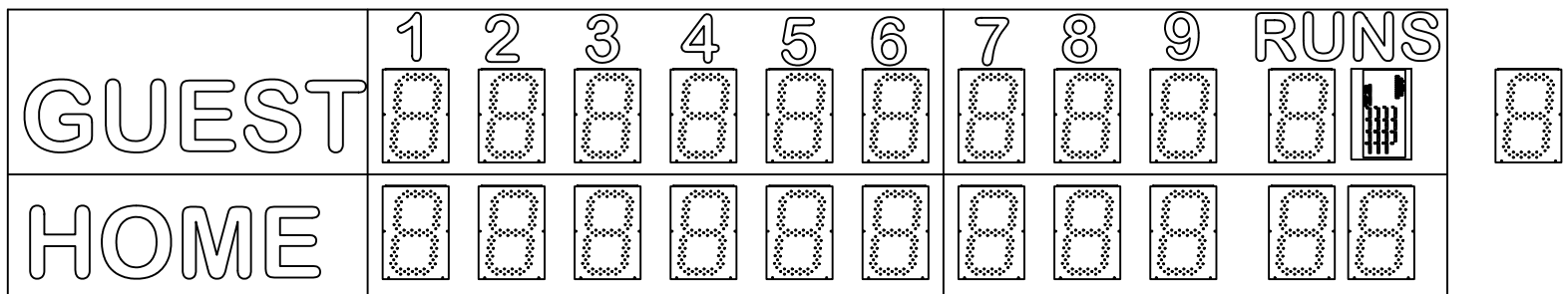
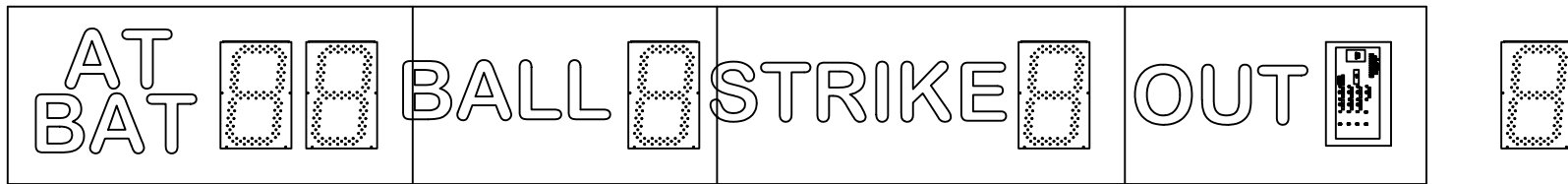
**5/16" LOCK WASHERS 18EA**

## INSTALLATION

1. It is recommended that a professional sign company be hired to install the scoreboard (see drawings). Eversan recommends a minimum depth of 8 FT. and 2 ½ FT. footer diameter. **Soil conditions and local codes should be used to determine footer depth and diameter in your area. All specifications given are to be used as a guide only.**
2. Calculate the wind load by standard formula for height and dimension of sign. Dimension of the sign is 8 FT. High x 18FT. Wide, add height and/or width of any sponsor panels. Approximate weight is 600lbs. **NOTE:** Check local codes for your area.
3. Prepare and sink I-beams, minimum I-Beam recommendation W 10 x 15 conforming to ASTM A36, align with plumb line and careful measurements. Beams should be 10' apart on center.
4. Determine height of lowest point for scoreboard, minimum recommendation 8FT. Mark and align on all mounting beams parallel to visual ground sighting.
5. Assemble the scoreboard per assembly instructions. Be sure to make the electrical connection between the top and bottom of the scoreboard
6. The scoreboard can now be tested prior to installing it on the beams. Failure to test the scoreboard prior to hanging will result in voiding all warranties. Any problems found during testing should be reported to Eversan, Inc. at (800) 383-6060 for immediate remedial action. When calling to report a problem have a detailed description of exactly what is happening. If possible have the scoreboard in visual sight and the control console in your possession.
7. With proper rigging lift the scoreboard and secure using brackets and hardware provided..  
(see the installation diagrams)

# 9875 Assembly

1. UNPACK TWO SCOREBOARD HALVES. REMOVE THE AT BAT, BALL, STRIKE, AND OUT DIGITS FROM THE TOP SECTION OF THE SCOREBOARD. REMOVE THE GUEST RUNS UNITS DIGIT FROM THE BOTTOM HALF.
2. MECHANICALLY FASTEN THE TOP SECTION TO THE BOTTOM SECTION USING 4-PRESSURE PLATES AND 8-5/16" BOLTS. ELECTRICALLY CONNECT TOP TO BOTTOM BY CONNECTING THE 3-PIN CONNECTOR FOR THE PLUS 28VDC, ALSO CONNECT THE 11-PIN CONNECTOR MARKED MASTER TO THE MOTHERBOARD UNDER THE OUT DIGIT. THE CONNECTOR ON THE MOTHERBOARD IS THE ONLY CONNECTOR OPEN. CONNECTOR CAN ONLY GO ON ONE WAY.
3. REPLACE THE DIGITS AND PLACE THE 2-BACK SUPPORTS ON THE BACK OF THE SCOREBOARD USING 5/16" BOLTS. SCOREBOARD IS READY FOR TESTING.
4. REMOVE THE CONDUIT PLATE ON THE BACK OF THE SCOREBOARD, THERE IS 120VAC PLUG THERE FOR POWER. USE THE OPERATING INSTRUCTIONS AND TEST THE SCOREBOARD PRIOR TO HANGING. FAILURE TO TEST MAY VOID ALL WARRANTIES.

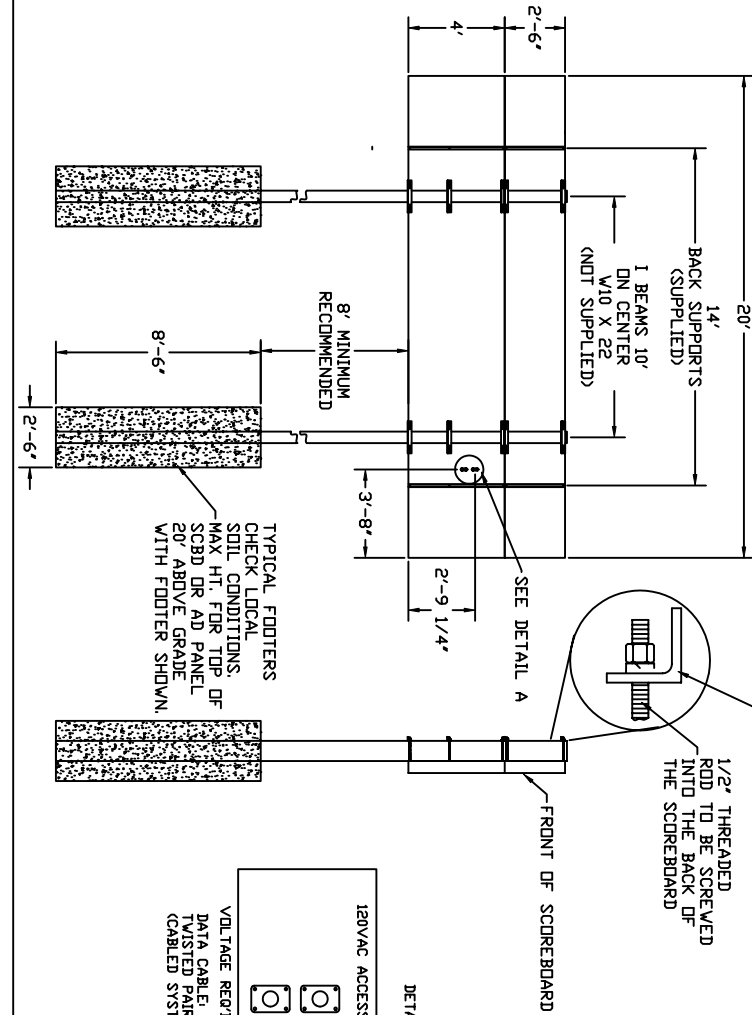


# 9875 TYPICAL INSTALLATION

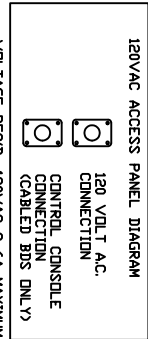
**STEP 1:**  
SET I-BEAMS 10 FOOT APART ON CENTER.

**STEP 2:**  
ASSEMBLE 9875 PER ASSEMBLY INSTRUCTIONS, USING PROPER RIGGING LIFT 9875 INTO PLACE, CHECK LEVEL AND SECURE USING 1/2" THREADED ROD, NUTS, WASHERS AND BRACKET SUPPLIED. A MINIMUM OF 8-BRACKETS SHOULD BE USED TO HOLD THE 9875 IN PLACE.

**STEP 3:** SCOREBOARD IS READY FOR WIRING.



TYPICAL FOOTERS  
CHECK LOCAL  
SOIL CONDITIONS,  
MAX HT. FOR TOP OF  
SCRD OR AD PANEL  
20' ABOVE GRADE  
WITH FOOTER SHOWN



1/2" THREADED ROD TO BE SCREWED INTO THE BACK OF THE SCOREBOARD

BRACKET TO BE TIGHTENED TO THE BEAM USING NUT AND LOCK WASHER TO HOLD SCOREBOARD (ALL HARDWARE SUPPLIED)

REVISED BY: AR DATE: 5/15	<b>EVERSAN</b>
APPROVED BY: AR DATE: 5/15	
UNREVISIONED TOLERANCES: DIMENSIONS: .0005" - .0015" ANGLES: .0005" - .0015" HOLE DIA: .0005" - .0015" HOLE DIA: .0005" - .0015" HOLE DIA: .0005" - .0015"	TYPICAL 9875 INSTALL BEAM: W10 X 22 MAX HT: 20' ABOVE GRD
9875 INSTALL	
REVISED BY: AR DATE: 5/15	1 OF 1

## INSTRUCTIONS FOR WIRING POWER

1. Determine 120VAC entrance and run conduit to pre-installed electric box on back of scoreboard (see diagram).
2. The scoreboard draws under 12 amp but requires its own circuit breaker. Eversan, Inc. recommends using a 20-amp, GFCI breaker.

### **CAUTION: Cabled System Only**

The data cable is a pre-wired, 2 conductor shielded, 22GA stranded cable. Any cable splicing should be color-coded or failure of the computer power supply will result. Continuity of the shield is essential in reducing possible damage due to lightening.

### **Electrical Specifications:**

Electric outlets for scoreboards are always on a “clean” unused, switched breaker box. Pay close attention to the power source and connections. It is recommended that a key-switch or switched breaker box be used to turn off the system at the end of use each day. **The scoreboard should always be powered down when not in use.**

### **Power up Sequence:**

#### **120VAC Operation (Cabled System)**

1. Plug the control console into the scoreboard using the cable provided. Any of the 2-pin connectors on the control console can be used. The connector for the scoreboard is located on the back (see diagram).
2. Power up the scoreboard using 120VAC, connection on back of scoreboard (see diagram).
3. The scoreboard will now go through diagnostics. Each digit will show an 8 and then go blank. The HOME and GUEST RUNS, HITS, and ERRORS will show zero.
4. Turn the control console on using the rocker switch located on the upper left side. The control console will display “EVERSAN SCORING SYSTEMS” for approx. 5 seconds. The console display will then read “ AT BAT=00” on the top line and “ BALL=0 STRK=0 OUT=0 on the bottom line. You are now ready to use the operating instructions to test all the functions.



**Control Console Battery Operation 12 VDC (Optional):**

1. Attach the battery connector to the 4 pin connector on the back of the control console (see diagram).
2. Connect the cigarette lighter plug into the Eversan battery pack or car cigarette lighter. Continue, starting with step 3 above.

**WIRELESS OPERATION**

Eversan, Inc.'s 2.4GHZ frequency hopping wireless control system allows for multiple scoreboards to be controlled separately or together within feet of each other.

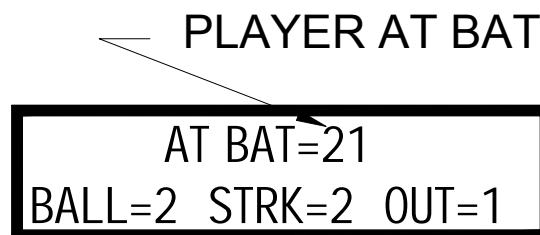
**Initializing the wireless system:**

**The following steps must be used to ensure proper communication from the 9872 wireless control console and each scoreboard you want to control. For a wireless system to work the scoreboard must always be turned on before the control console.**

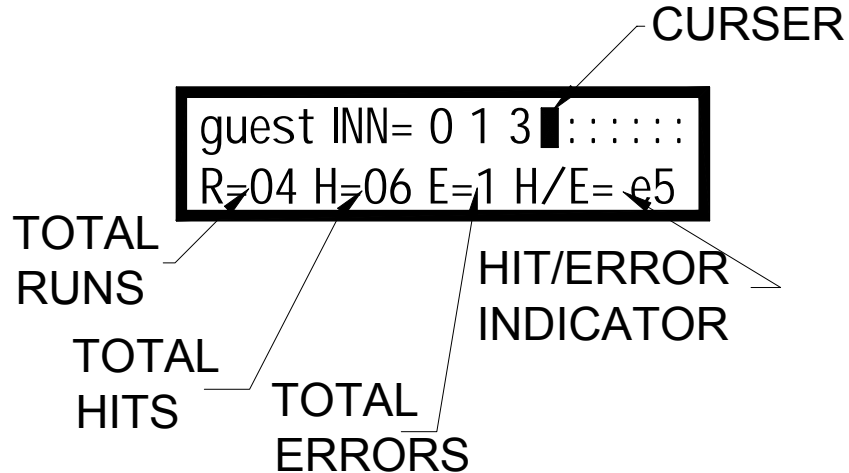
- 1.** Turn the power to on each 9875 scoreboard that you want to control. The scoreboards should show the center segment of each digit illuminated.
- 2.** Connect the antenna, 9VDC adapter provided or optional 12-volt battery, to the 9875/9872 wireless control console (see diagram for proper placement).
- 3.** Turn on the control console. The control console will display "EVERSAN SCORING SYSTEMS" for approx. 5 seconds. The display will then show, "WIRELESS NETWORK SYSTEM ID = XX" for approx. 3 seconds. The console will then show "AT BAT=00" on the top line and "BALL=0 STRK=0 OUT=0" on the bottom line of the console display.
- 4.** While the control console is initializing it is also communicating with the scoreboard and the scoreboard will go through its diagnostic checkout. Each number position will flash eight (8) and then go blank. The scoreboard will then display zero in the HOME and GUEST RUNS, HITS, and ERR. See operating instructions.

**Operating instructions:**

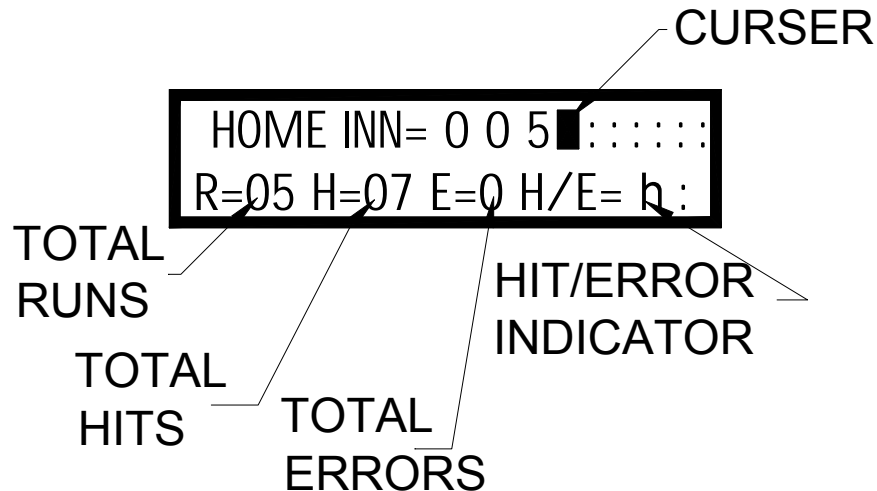
1. There are 3-operating windows for this scoreboard control console, AT BAT, GUEST and HOME.
2. **AT BAT WINDOW:** This is the primary use window. In this window you track BALLS, STRIKES and OUTS. By pushing and releasing the function button the function will increment. To clear BALLS and STRIKES push and release the CLEAR BS switch.



3. **GUEST WINDOW:** To enter this window push and release the GUEST push button switch. The functions used in this window: INNING, HIT and ERROR. Pushing and releasing the HIT or ERROR button will increment them by one, or use the 0-9 keypad to enter a 1-digit number for ERROR position or a two-digit number for hits total hits. The INNING push button moves the cursor on the control console display from inning to inning. Where the cursor is displayed is the inning score you are able to change using the 0-9 keypad. The cursor must be flashing to change the score. Total Runs are automatically tallied from the individual inning scores.



4. **HOME WINDOW:** To enter this window push and release the HOME push button switch. Every function is exactly like the GUEST WINDOW but will be displayed on the HOME portion of the scoreboard.



5. **BLANK:** This push button is used in conjunction with a function button. For example if you accidentally enter a score in the 5<sup>th</sup> inning for the home team and you are only in the 2<sup>nd</sup> inning, then move the cursor to the 5<sup>th</sup> inning and push BLANK, no number will appear in the 5<sup>th</sup> inning.
6. **BRIGHTNESS:** This button along with the 0-9 keypad allows the user to control the brightness of the scoreboard. Push and release the BRIGHTNESS button and then select any number 0-9, 0 being lowest brightness (numbers not lit) and 9 being full brightness.

### **Wireless control console battery operation (optional):**

1. Turn the scoreboard power on.
2. Attach Eversan, Inc.'s special battery connector to the 4-pin connector on the back of the wireless control console (see diagram).
3. Connect the cigarette lighter plug into the Eversan battery pack or a car cigarette lighter.

### **Care of Battery Pack**

Under no circumstances should the battery pack be punctured or disassembled in any way. NEVER insert anything into the battery receptacle except a standard cigarette lighter type plug. The battery pack should always be stored in a fully charged condition and in a cool, dry place. When stored for a long period of time, the battery should be charged before use.

### **Charging**

The Battery should be charged after each use. Insert the cigarette lighter type plug of the charger into the receptacle on the side of the battery pack. Plug the charger into any standard 120volt household plug. Depending on the amount of drain on the battery, the following is a guide for recharging time. A 25% discharge requires 4 hours recharging. A 50% discharge requires 8 hours. A 100% discharge requires 14 hours recharging time.

**NOTE:** The Battery should NOT be left in the Recharging mode for more than 24 hours as this can damage the cell.

**CAUTION:** DO NOT attempt to charge this battery pack on currents other than 60-cycles 110volt/120volt AC current. Do not attempt to use the battery during charging.

### **MAINTENANCE OF OUTDOOR SCOREBOARDS**

The EVERSAN Outdoor Scoreboards rugged design will provide many years of trouble free performance.

**Should you have a problem:**

The EVERSAN Outdoor Scoreboard modular design allows easy removal and replacement of all key elements. **Under no circumstances will EVERSAN, INC. pay for service performed on any of our products without expressed written notice from EVERSAN, INC. to the Service Company.**

**Note to the customer:**

Please call our qualified service technicians if you experience any difficulties. We can assist you in solving your problem or help in returning the section in need of repair.

**REMOVAL AND REPLACEMENT PROCEDURES**

Should repair become necessary the customer will note that each digit (8) is housed as an individual item within the scoreboard.

- Determine which digit is malfunctioning by observing the check out of 8's during power up or during operation.

**To remove or replace digits:**

1. REMOVE ALL POWER FROM THE SCOREBOARD.
2. Unscrew the (4) four screws that hold the digit in place and slowly pull the digit away from scoreboard.
3. Detach the 9-pin segment data cable connector by pressing down on the top the latch on the side of the locking connector and pulling up on the connector. The Digit is removed.
4. Take the new digit and connect the 9-pin connector in the scoreboard to the 9-pin connector on back of digit. DO NOT FORCE.

**NOTE:** The connector is polarized and must be installed in only one direction.

Replacing the (4) four screws that hold the digit into place and test scoreboard. If problem persists please contact Eversan, Inc.