

EVERSAN

www.eversan.com

MODEL 9665



HOCKEY SCOREBOARD

Instruction Manual

Address: 34 Main Street, Whitesboro, NY 13492

Phone: 315-736-3967 • Toll Free: 800-383-6060 • Fax: 315-736-4058

SCOREBOARDS • TIMERS • MESSAGE SIGNS • VIDEO DISPLAYS • WIRELESS

Table of Contents

Check List	1
Out of Box Setup and Test	1
Installation Instructions	2
Wiring Instructions	2
Operating Instructions.....	3
Maintenance of Outdoor Scoreboards	4
Removal and Replacement Procedures	4
Troubleshooting	6
Cabled Console	7
Wireless Console	8



Model 9665 Hockey Scoreboard

Check List

- One (1) Scoreboard with Z-Brackets.
- One (1) LCD Control Console.
- One (1) Control Cable (A), Connector, and Wall Junction Box (Optional) Cable System Only.
- One (1) Custom cut Control Cable (B) with Connectors.(Optional) Cable System Only)
- Two (2) Antenna. (Wireless Option Only)

NOTE: Please check that these items are available prior to initial test of the scoreboard. If you are missing any items check the all boxes that the parts were shipped in. If parts are still missing please **call (800) 383-6060 for assistance.**

Before You Begin:

ALWAYS connect/disconnect cables before power is turned on.

NEVER service without contacting an Eversan, Inc. Technician.

NEVER service with the power on.

Out of Box Setup and Test

The Eversan, Inc. 9665 series scoreboard system comes complete and ready to operate.

NOTE: Follow these instructions in order to assure correct operation and installation. Warranties will be void if the procedures below are disregarded. **Failure to test scoreboard prior to hanging will void all warranties.**

1. Plug wall junction box cable (Optional) or Data cable (cabled systems only) to the side of the scoreboard (2-pin connector).
2. Plug the console cable (cabled systems only) into the wall junction box.
3. Plug the console cable to the console. Connect 9V adapter to console.
4. Connect antenna to scoreboard and console (wireless systems only).
5. Plug the scoreboard into a 120VAC outlet or use the optional 12V battery to power the scoreboard. Upon power up, your scoreboard will check the displays by flashing 8's and then setting one in the period with the rest of the display going blank.
6. Turn on the control console using the rocker switch on the upper left side. The console will display EVERSAN, INC. SCOREBOARDS for approximately 2-seconds. The console will then display TIME=00:00.0, HOME=00 GUEST=00. The scoreboard will respond and show the matching data with the exception of the minute's digits will remain blank along with the home and guest penalty digits.
7. If using a wireless system you must always power the scoreboard before turning the control

console on. If you are operating multiple scoreboards with one console you must power all the scoreboards prior to turning on the console. If you are operating multiple scoreboards with multiple consoles. You must turn power on to one scoreboard and then the console you want to use to operate that scoreboard. This allows each system to set automatically so as not to interfere with each other.

8. Go to operating instructions to test scoreboard.

Installation Instructions

1. It is recommended that a professional sign company be hired to install the scoreboard. SEE DRAWINGS
2. Eversan recommends a minimum depth of 5 ft. and a 2ft. footer diameter.
3. Calculate the wind loading by standard formula for height and dimension of sign.
NOTE: Check local codes for your area.
4. Prepare and sink I-beams, W6 x 15 I-Beam conforming to ASTM A36 recommended minimum, align with plumb line and careful measurements.
5. Determine height of lowest point for scoreboard. Mark and align on all mounting beams parallel to visual ground sighting.
6. Drill and bolt (3/8 hardened bolts) or weld provided bottom Z-brackets to the posts as shown in the installation diagram.
7. Lift scoreboard set onto Z bracket. Secure temporarily with a clamp.
8. Place the top Z-brackets on the board and install in the same manner as the lower.
9. The board is now ready to be wired.

INSTRUCTIONS FOR WIRING

(See Installation Diagram)

Electrical Specifications: Electric outlets for scoreboards are always on a “clean” unused, switched breaker box. Pay close attention to the power source and connections. It is recommended that a key-switch or switched breaker box be used to turn off the system at the end of use each day. **The scoreboard should always be powered down when not in use.**

Power Requirement: 120VAC @ 1 amp. Eversan, Inc. recommends using a 10-amp, GFCI, breaker for outdoor scoreboard power.

Optional Battery: 12VDC 7AH rechargeable battery may be purchased to use with this scoreboard. The four-pin round connector on the left side of scoreboard is the input for DC power.

CAUTION: (Cabled System Only) The data cable is a pre-wired, 2 conductor shielded, 22GA stranded cable. Any cable splicing should be color-coded or failure of the computer power supply will result. Continuity of the shield is essential in reducing possible damage due to lightning.

Operating Instructions

Setting the Time: To set the time the clock must be stopped. Press and release the TIME button

and enter a four-digit number using the 0-9 numbered keypad. Example, push and release the TIME button and enter 0-2-0-0 and the clock will show two minutes. If an error has been made, press and release the TIME button and repeat above procedure. The time entered is displayed on both the console's LCD and scoreboard display.

Starting and Stopping the Clock: The STOP/ GO button for the clock is located on the bottom left side of the 0-9 keypad and is green. Pressing and releasing the button once will start the clock a second time will stop the clock.

Setting the Score: Press the HOME or GUEST button once to increment by one. Press and hold down to decrement. Press and release the button and enter any 2-digit number from 0-9 on the numbered keypad.

Setting the Period: The clock must be stopped to set the period. Press and release the RED button on the keypad to increment the period by one. The console LCD display will show each period change, for approximately 5 seconds, on the console and then display the score.

Setting Penalties: The clock must be stopped to enter a penalty. Press and release either HOME PLYR/PENALTY or GUEST PLYR/PENALTY button and enter six-digit number via the keypad. For example, if you would like to enter player #23 with 1 minute, 30 second penalty time, enter: 2-3-0-1-3-0. Only the last three digits of the penalty time will be displayed on the scoreboard. The system will automatically keep track of up to 7 players in each penalty box. To clear a penalty, stop the clock, push and release HOME PLYR/PENALTY or GUEST PLYR/PENALTY, enter the player number followed by four zero's.

Intermission Mode: This feature allows you to time down the intermission without affecting the penalty times on the scoreboard. With the clock stopped press and release the INTERMISSION button and enter a four-digit time via the keypad. Press the STOP/GO switch and the clock will count down and the horn will sound at zero time but the penalty times will not change. At the end of the intermission increment the period and set the time using the TIME button.

Scroll: H/SCROLL and G/SCROLL allow you to review the active penalties, players and time left on each penalty. The clock must be stopped to review the penalties. Each time you press and release either H/SCROLL or G/SCROLL one penalty with player number and time left will be displayed on the console. Continue to press and release the button and each active penalty will be displayed in order of entry.

Wireless control console battery operation (optional):

1. Turn the scoreboard power on.
2. Attach Eversan, Inc.'s special battery connector to the 4-pin connector on the back of the wireless control console (see diagram).
3. Connect the cigarette lighter plug into the Eversan battery pack or a car cigarette lighter.

Care of Battery Pack

Under no circumstances should the battery pack be punctured or disassembled in any way. NEVER insert anything into the battery receptacle except a standard cigarette lighter type plug. The battery pack should always be stored in a fully charged condition and in a cool, dry place. When stored for a long period of time, the battery should be charged before use.

Charging

The Battery should be charged after each use. Insert the cigarette lighter type plug of the charger into the receptacle on the side of the battery pack. Plug the charger into any standard 120volt household plug. Depending on the amount of drain on the battery, the following is a guide for recharging time. A 25% discharge requires 4 hours recharging. A 50% discharge requires 8 hours. A 100% discharge requires 14 hours recharging time.

NOTE: The Battery should NOT be left in the Recharging mode for more than 24 hours as this can damage the cell.

CAUTION: DO NOT attempt to charge this battery pack on currents other than 60-cycles 110volt/120volt AC current. Do not attempt to use the Battery during charging.

MAINTENANCE OF OUTDOOR SCOREBOARDS

The EVERSAN Outdoor Scoreboards rugged design will provide many years of trouble free performance.

Should you have a problem:

The EVERSAN Outdoor Scoreboard modular design allows easy removal and replacement of all key elements. **Under no circumstances will EVERSAN, INC. pay for service performed on any of our products without expressed written notice from EVERSAN, INC. to the Service Company.**

Note to the customer:

Please call our qualified service technicians if you experience any difficulties. We can assist you in solving your problem or help in returning the section in need of repair.

REMOVAL AND REPLACEMENT PROCEDURES

Should repair become necessary the customer will note that each digit (8) is housed as an individual item within the scoreboard.

- Determine which digit is malfunctioning by observing the check out of 8's during power up or during operation.

To remove or replace digits:

1. REMOVE ALL POWER FROM THE SCOREBOARD.
2. Unscrew the (4) four screws that hold the digit in place and slowly pull the digit away from scoreboard.
3. Detach the 9-pin segment data cable connector by pressing down on the top the latch on the side of the locking connector and pulling up on the connector. The Digit is removed.
4. Take the new digit and connect the 9-pin connector in the scoreboard to the 9-pin connector on back of digit. DO NOT FORCE.

NOTE: The connector is polarized and must be installed in only one direction.

5. Replacing the (4) four screws that hold the digit into place and test scoreboard. If problem persists please contact Eversan, Inc.

Removing the Power Supply Box (in the front of the scoreboard):

1. Remove the access panel's four, 8-32 screws from the top and bottom of the panel.
2. Remove antenna (Wireless only). Slowly remove power supply.
3. Remove segment data ribbon cable connector.
4. Disconnect large 22/44-edge connector, it has an aluminum shroud, from the power supply by rocking it gently up and down.
5. Unscrew the 5-wires from 8-pin terminal strip. **Mark wire with location for future use.**

Replacing the Power Supply Box:

1. Screw on the five power wires per marked code.
2. Reconnect 22/44-edge connector to side of power box.
NOTE: This is a polarized connector and is inserted in only one direction.

3. Replace segment data ribbon cable.

NOTE: this polarized connector is inserted in only one direction.

4. Before closing, install antenna (wireless only) and check out scoreboard.

TROUBLESHOOTING PROCEDURES

Unit Doesn't Power Up:

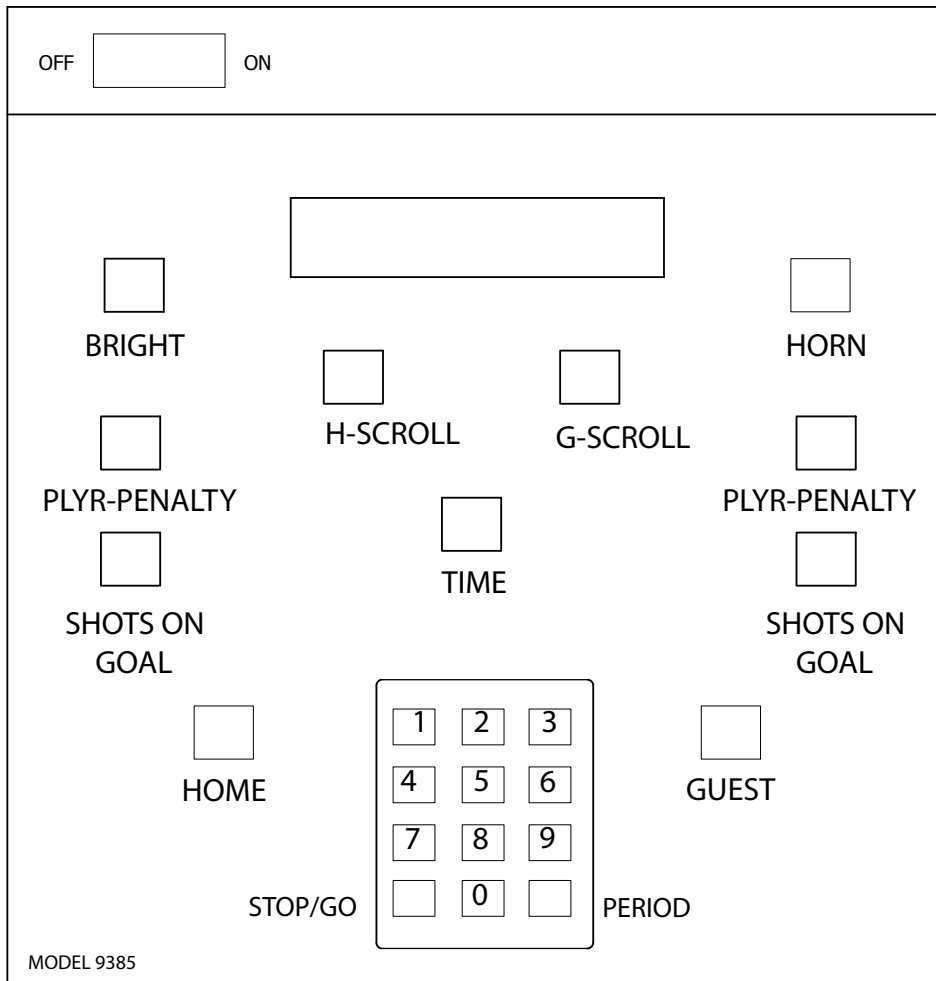
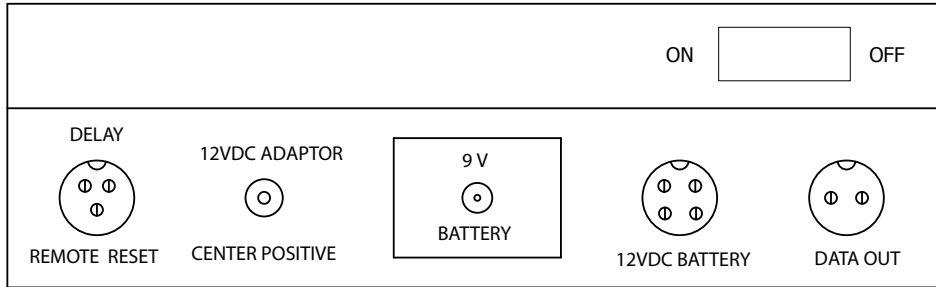
1. Make sure you have 120VAC going to the outlet.
2. Check the fuse on the power supply by removing the (4) four screws securing the power supply cover, tilting the top of cover forward.
3. Fuse holder cap will be on the upper right hand side of the power supply.
4. Using a flat head screwdriver, rotate the cap counterclockwise quarter turn to remove the fuse.
5. Test the fuse with an ohmmeter to check if it is blown.
6. If the fuse is blown, replace it with a 250-volt, 1-amp fuse and reinstall fuse cap and power supply cover.

Lazy Segments:

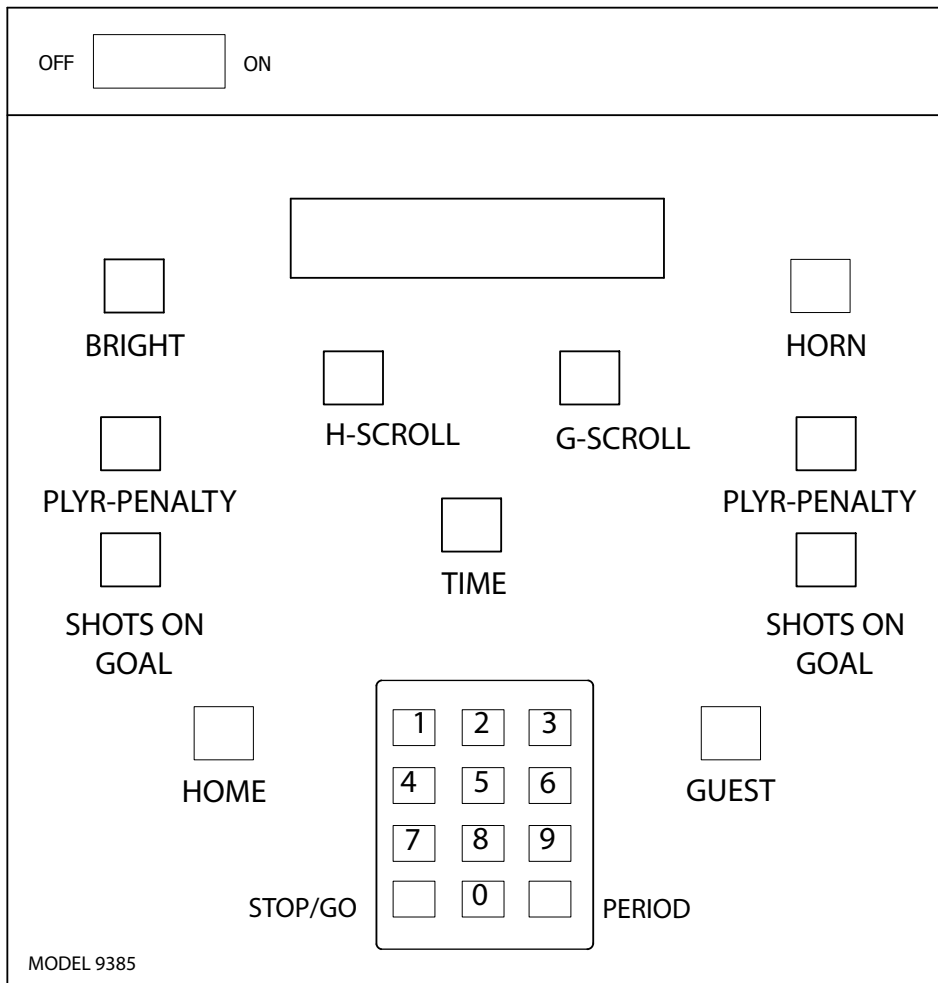
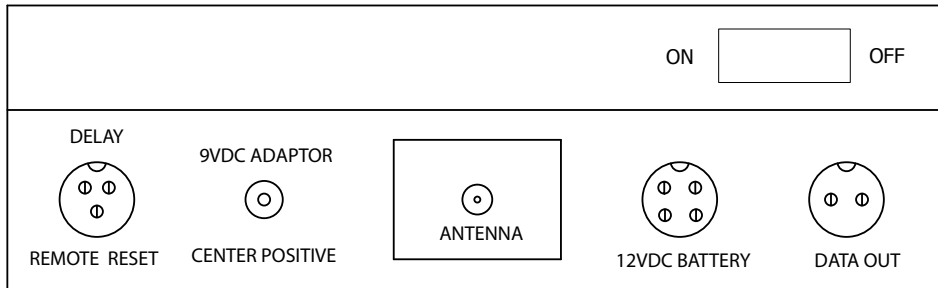
1. If a lazy segment is detected and you are using the optional 12-volt battery be sure the battery is fully charged.
2. If the battery is fully charged and the lazy segment appears to be in only one or two digits remove the digit window as described in the digit removal procedure.
3. Carefully move the suspect segment back and forth with your finger to free any debris.
4. Using **compressed air only**, blow excess debris out of segment works.
5. If problem persists, contact Eversan, Inc.

Do not spray digits with any lubricants. Doing so will void the warranty.

9385 SERIES 2.4GHZ CABLED LCD CONTROL CONSOLE



9385 SERIES 2.4GHZ WIRELESS LCD CONTROL CONSOLE





www.eversan.com

**MODEL 9665
HOCKEY
SCOREBOARD**

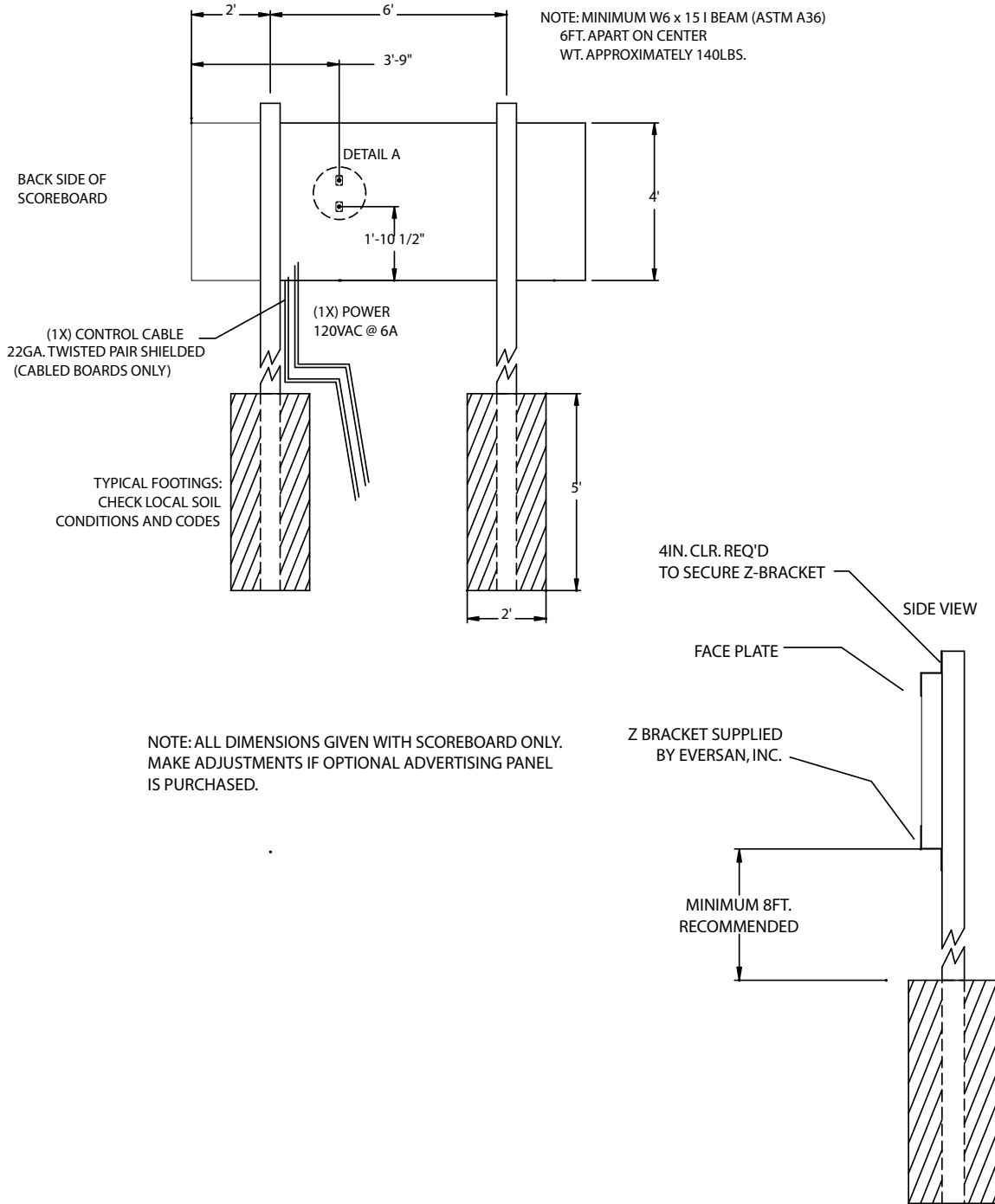
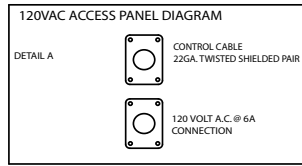
Address: 34 Main Street, Whitesboro, NY 13492

Phone: 315-736-3967 • **Toll Free:** 800-383-6060 • **Fax:** 315-736-4058

SCOREBOARDS • TIMERS • MESSAGE SIGNS • VIDEO DISPLAYS • WIRELESS

TYPICAL MODEL 9665 INSTALLATION

1. SET BEAMS AT PROPER LOCATIONS.
2. LOCATE ON I BEAMS, WHERE THE BOTTOM OF SCORE BOARD WILL BE AND MOUNT BOTTOM Z BRACKETS. EITHER BOLT OR WELD Z BRACKET TO I BEAMS.
3. LIFT SCOREBOARD AND OPTIONAL SPONSER INTO Z BRACKETS, CHECK FOR LEVEL AND SECURE WITH TOP BRACKETS.



NOTE: ALL DIMENSIONS GIVEN WITH SCOREBOARD ONLY.
MAKE ADJUSTMENTS IF OPTIONAL ADVERTISING PANEL
IS PURCHASED.