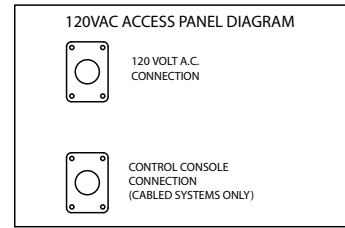


## TYPICAL INSTALLATION OF MODEL 9384

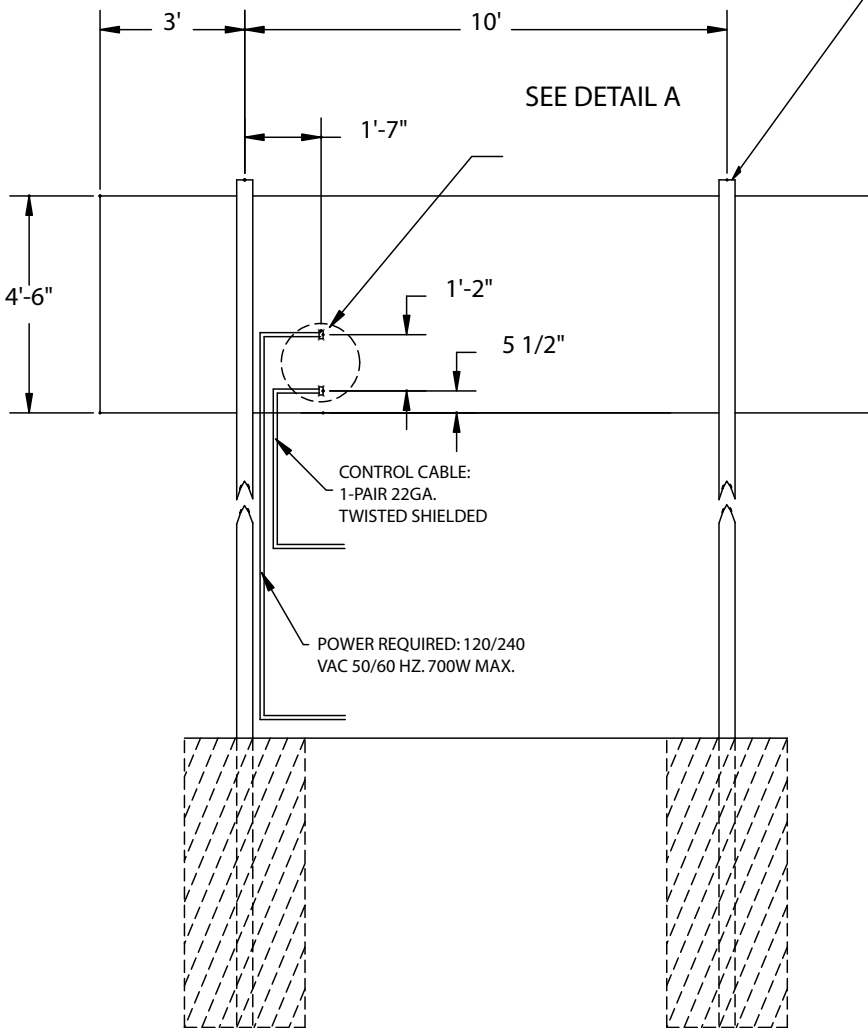
1. SET I BEAM AT PROPER LOCATIONS.
2. LOCATE, ON I BEAMS, WHERE THE BOTTOM OF SCORE BOARD WILL BE AND MOUNT BOTTOM Z BRACKETS. EITHER BOLT Z BRACKET TO I BEAM OR WELD Z BRACKET TO I BEAM.
3. LIFT SCORE BOARD AND OPTIONAL SPONSER PANEL INTO Z BRACKETS, CHECK FOR LEVEL AND SECURE WITH TOP BRACKETS.

DETAIL A



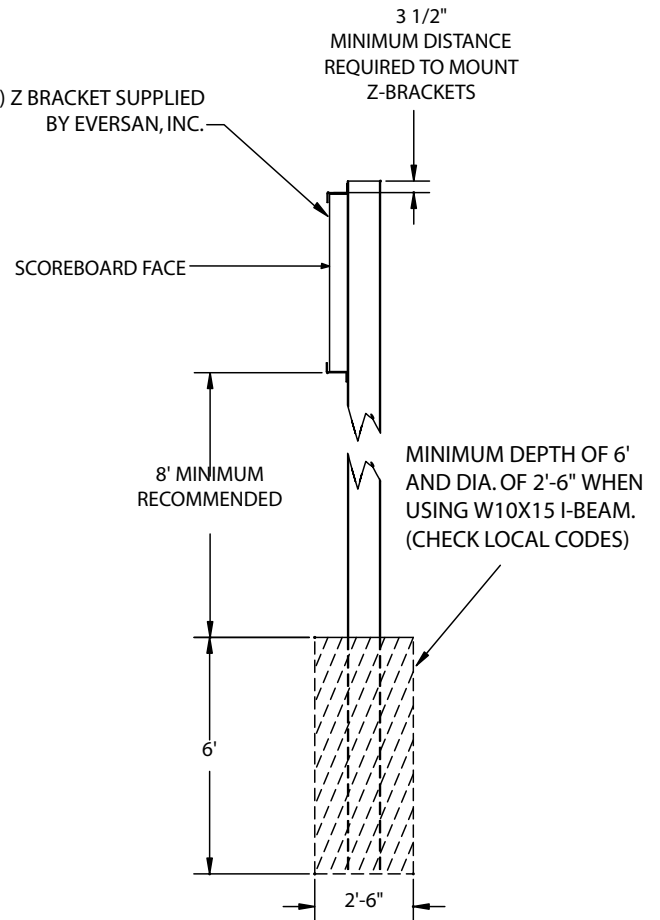
NOTE: ALL DRAWINGS ARE FOR SCOREBOARD ONLY. ADJUST SIZE AND LENGTH OF I-BEAMS IF OPTIONAL SPONSER PANEL IS PURCHASED.

SCOREBOARD WT.: 200LBS.  
DIMENSIONS: 16' X 4'-6" X 6"



2EA. W10X15 I-BEAMS REQUIRED  
10' APART ON CENTER.  
(NOT SUPPLIED BY EVERSAN)

(4X) Z BRACKET SUPPLIED  
BY EVERSAN, INC.



MATERIAL: 1/4IN. X 3IN. P&O M1020 STEEL.